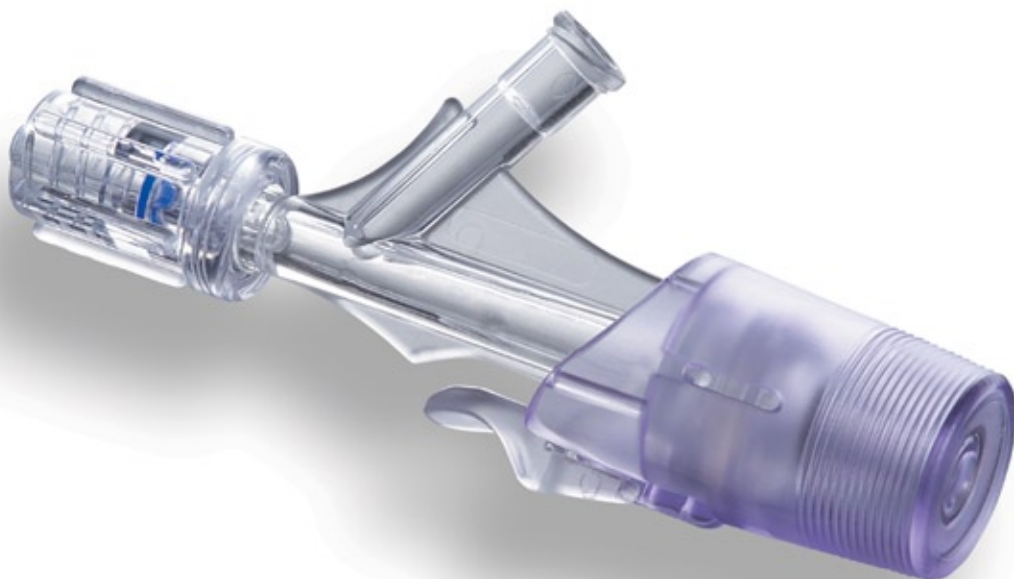


# Y-CLICK

Y CONNECTOR FOR PTCA APPLICATION



Y-CLICK



ICU Medical, Inc.  
♥ CRITICAL CARE SYSTEMS

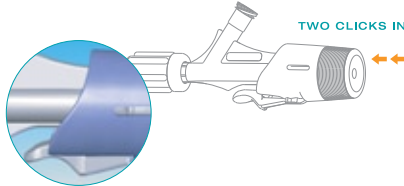
# Y-CLICK

Y CONNECTOR FOR PTCA APPLICATION



The Y-Click connector provides an easy to use hemostatic device for both diagnostic and interventional procedures. The ergonomically designed Y-Click significantly reduces the blood loss during interventional procedures using a three stage valve. With the easy to use lever you can use Y-click in the following positions.

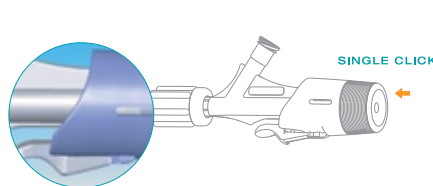
## OPEN POSITION



For insertion of guide wire / catheter

- Lever holds the product at the open position
- Provides convenience at device insertion and removal stage

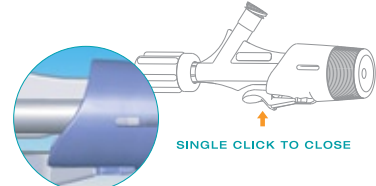
## SEMI-OPEN POSITION



Allows for maneuverability with minimal friction while preventing back bleeding

- Used when you want to manipulate the catheter or wire with no blood loss
- Easier catheter maneuverability

## CLOSED POSITION



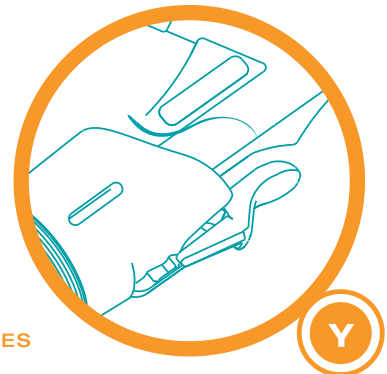
Seals around the catheter or wire to prevent blood loss while still allowing maneuverability of guide wires and small diameter catheters

- Press Lever – the product returns to the closed position

## ONE HANDED OPERATION

Compared to current devices on the market which use either a Tuohy-Borst valve or simple open close mechanism, the Y-Click allows the operator total control over the manipulation of catheters and wires without concern of bleed back

- The Y-Click utilizes a one handed operation for both opening the device by pushing the valve or closing the device by pressing on the lever with one's thumb.

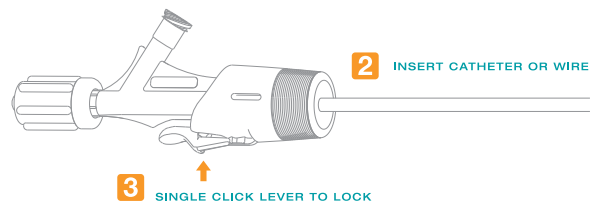
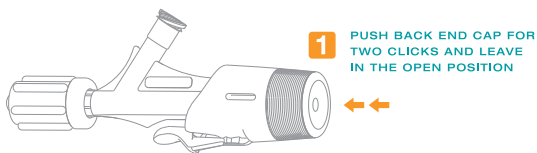


## UNIQUE ADVANTAGES

Self Closing Mechanism

During injection of contrast media, the device mechanism will shut itself to avoid leakage of contrast media through the proximal end

## INSERTION OF CATHETERS



PART NO	UNITS PER BOX
428860401	25